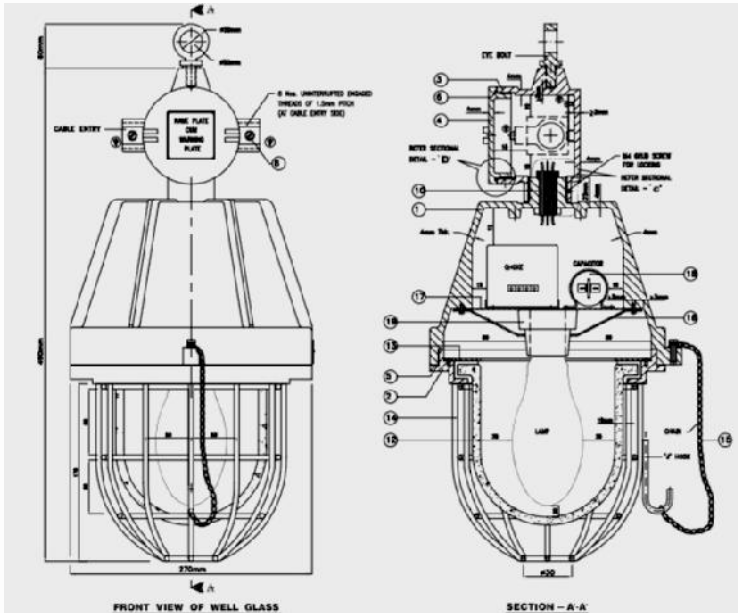


FLAMEPROOF LIGHT FITTING

FLAMEPROOF PENDANT LIGHT



FLAMEPROOF JHOOK

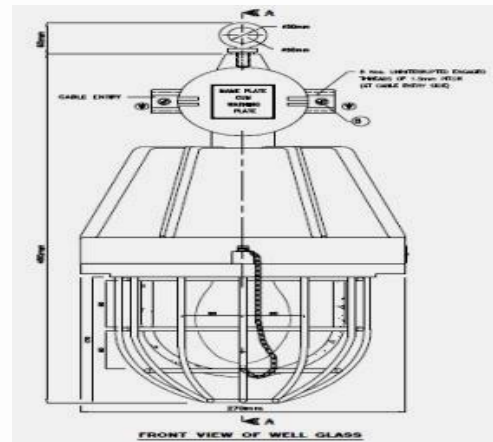


STANDARD SPECIFICATION:

DESIGN OF THE ENCLOSURE FOR FLAMEPROOF - WEATHERPROOF (IP:66) WELL GLASS FITTING IS SUITABLE FOR

| | |
|-------------------------|---|
| • 80/125W HPMV | • UPTO 65W INDUCTION / LED |
| • 70W METAL HALIDE/HPSV | • BEACON |
| • 150/ 200W GLS | • AVIATION LAMP WITH/ WITHOUT |
| • 3X26W CFL | • 150W METAL HALIDE/HPSV |
| • 1X26W EMERGENCY | • 300W GLS AT 230VOLTS/550 VOLTS AC/DC (MAX.) |

- GENERAL SPECIFICATION CONFORMS TO IS/IEC 60079-1:2007
- FLAMEPROOF :ZONE 1&2, GAS GROUP IIC AS PER IS/IEC 60079-1:2007
- ELECTRICAL APPARATUS WITH DEGREE OF PROTECTION IP:66 AS PER IS/IEC 60529:2001



FLAMEPROOF LED LIGHT FITTING



FLAMEPROOF VESSEL LAMP

FLAMEPROOF ROUND HEAD LIGHT



FLAMEPROOF BULKHEAD LIGHT



TYPES OF FLAMEPROOF LIGHT:

- LED FLAMEPROOF WELGLASS 15W TO 60W
- LED FLAMEPROOF BULKHEAD 15W TO 60W
- LED FLAMEPROOF ROUND HEAD 15W TO 60W
- LED FLAMEPROOF CLEANROOM 15W TO 60W
- LED FLAMEPROOF ROUND CLEANROOM 15W TO 60W
- LED FLAMEPROOF FLOOD LIGHT 45W TO 160W
- LED FLAMEPROOF BAY LIGHT 15W TO 60W
- FLAMEPROOF PL/CFL LIGHT



FLAMEPROOF HAND LAMP

IP
CASTING

TEMPERATURE
PAINT

GAS GROUP
'O' RING
USES

IP66 (IS /IEC 60529:2001)
AL-LM6/STAINLESS STEEL
(ALL GRADE)

T6 (IS/IEC 60079:2007)
EPOXY POLYESTER

IIA / IIB / IIC
NEOPRENE

LED LIGHT / Pharmaceutical
lighting / Mining Lighting /
Defense Lighting /
Petrochemicals Lighting

TYPES OF FLAMEPROOF LIGHT:

- LED FLAMEPROOF REACTOR VESSEL LAMP 15W
- LED FLAMEPROOF REACTOR HAND LAMP 15W
- LED FLAMEPROOF RVL/HL 15W 24V DC



SHREE ELECTRICAL & ENGINEERING COMPANY

Corporate Office : B-54, 4th Floor, High Street, Corporate Park, Kapurbawd, Thane (W) 400 607
Branch Office : 105, An dhara Commercial Complex, Char Rasta Eastern Express Highway, Vapi.
Factory : Plot C, B/h Stepnes Church, Nr. R Ma, GB Road, Manpada, Thane (W) 400 607
☐ 8888 399 333 / 022 - 41312345 E: sales@shreeelectrical.in / sales@shreeflameproof.com