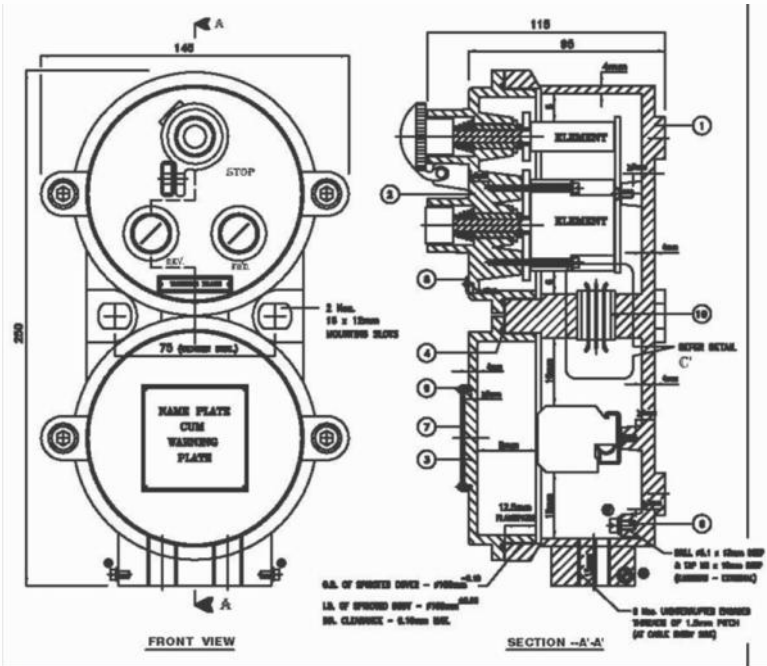


FLAMEPROOF/WEATHERPROOF PUSH BUTTON STATION



STANDARD SPECIFICATION

DESIGN OF THE ENCLOSURE FOR FLAMEPROOF-WEATHERPROOF (IP:66) CONTROL STATION FITTING IS SUITABLE FOR UPTO 10Amp., 550VOLTS AC/DC (MAX.) IN CAST ALUMINUM ALLOY LM6 CONSTRUCTION IS COMFORMING AS FOLLOWS:

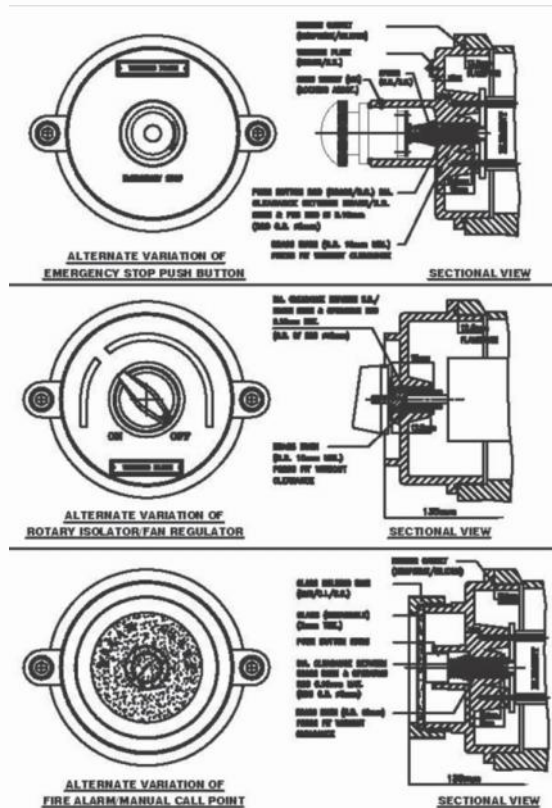
- GENERAL SPECIFICATION CONFORMS TO IS/IEC 60079-1:2007
- FLAMEPROOF : ZONE 1 & 2, GAS GROUP IIC AS PER IS/IEC 60079-1:2007
- ELECTRICAL APPARATUS WITH DEGREE OF PROTECTION IP:66 AS PER IS/IEC 60529:2001



ROTARY SWITCH / FAN REGULATOR



SINGLE PUSHBUTTON STATION



TECHNICAL SPECIFICATION :

IP	IP66 (IS/ IEC 60529:2001)
CASTING	AL-LM6/STAINLESS STEEL (ALL GRADE)
TEMPERATURE	T6 (IS/IEC 60079:2007)
PAINT	EPOXY POLYESTER
GAS GROUP	IIA / IIB / IIC
'O' RING	NEOPRENE
USES	Pushbutton Station/Plug & Socket/Rotary Switch / Manual call point / 4 way JB / Pendant Box



SHREE ELECTRICAL & ENGINEERING COMPANY

Corporate Office : B_54, 4th Floor, High Street, Corporate Park, Kapurbawd, Thane (W) 400 607
 Branch Office : 105, An dhara Commercial Complex, Char Rasta Eastern Express Highway, Vapi.
 Factory : P ot C, B/h Stepnes Church, Nr. R Ma , GB Road, Manpada, Thane (W) 400 607
 ☐ 8888 399 333 / 022 - 41312345 E: sales@shreeelectrical.in / sales@shreeflameproof.com